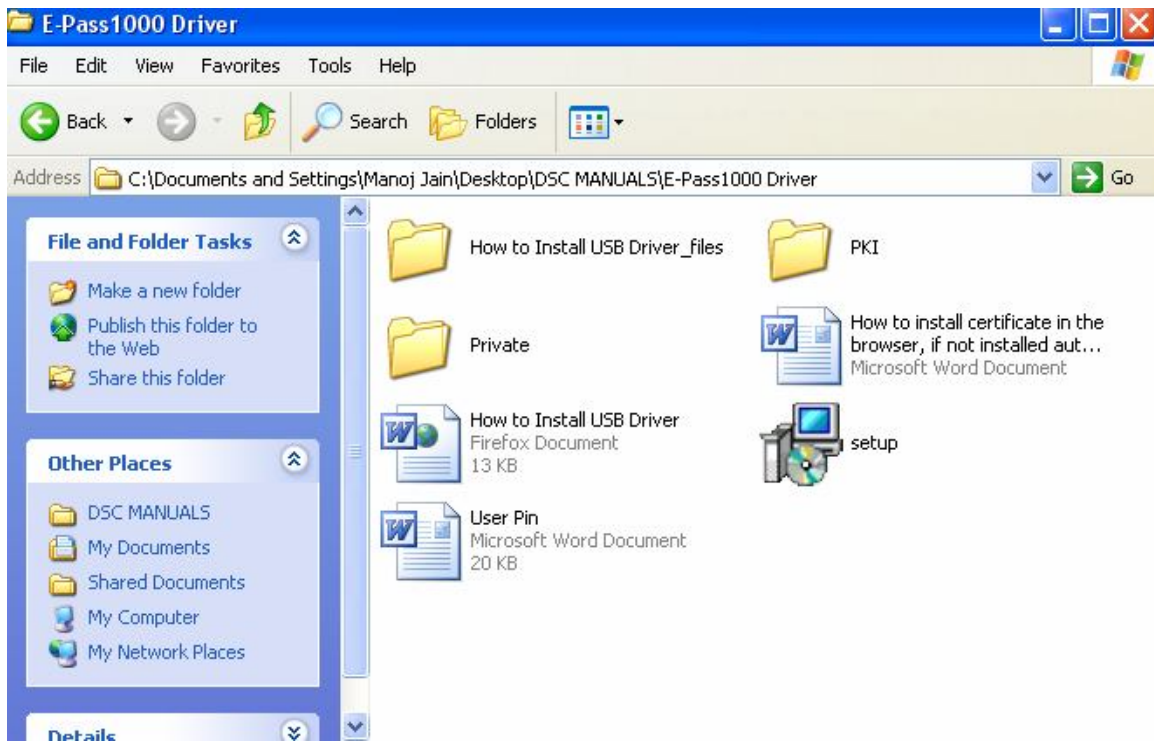
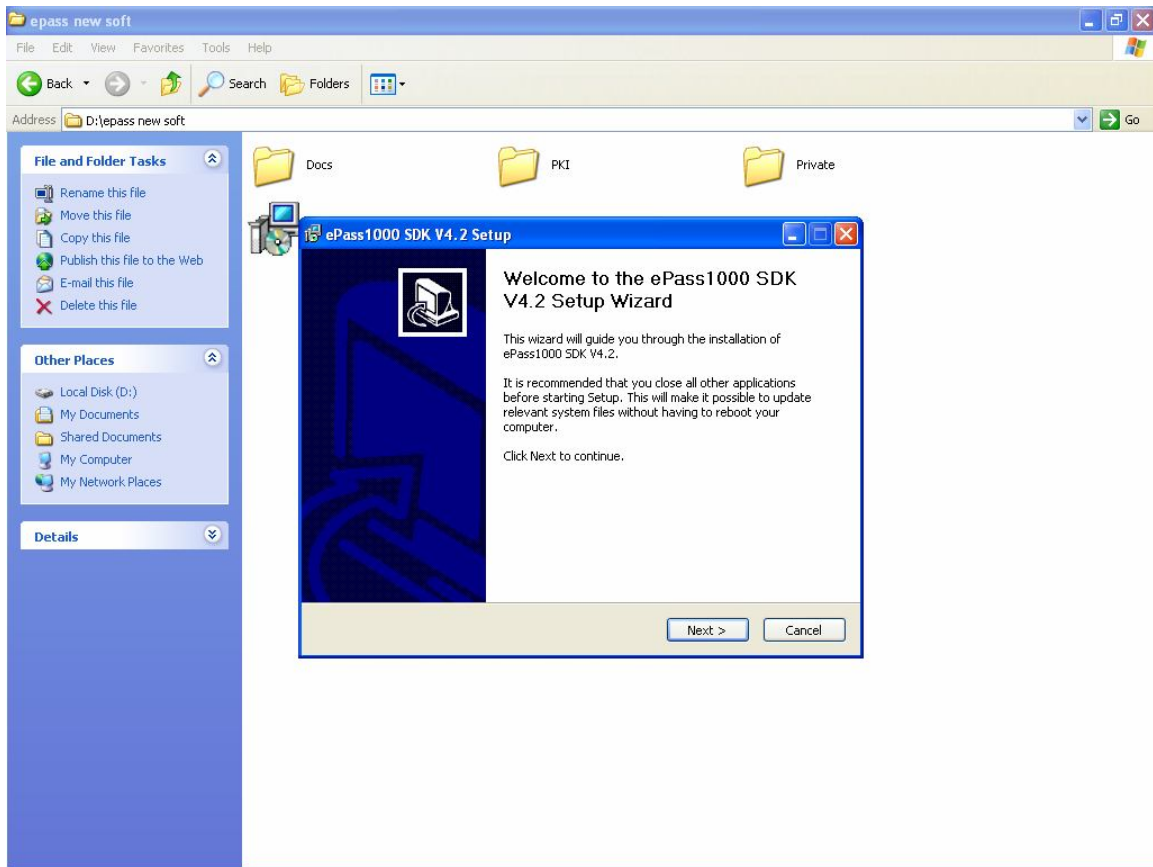




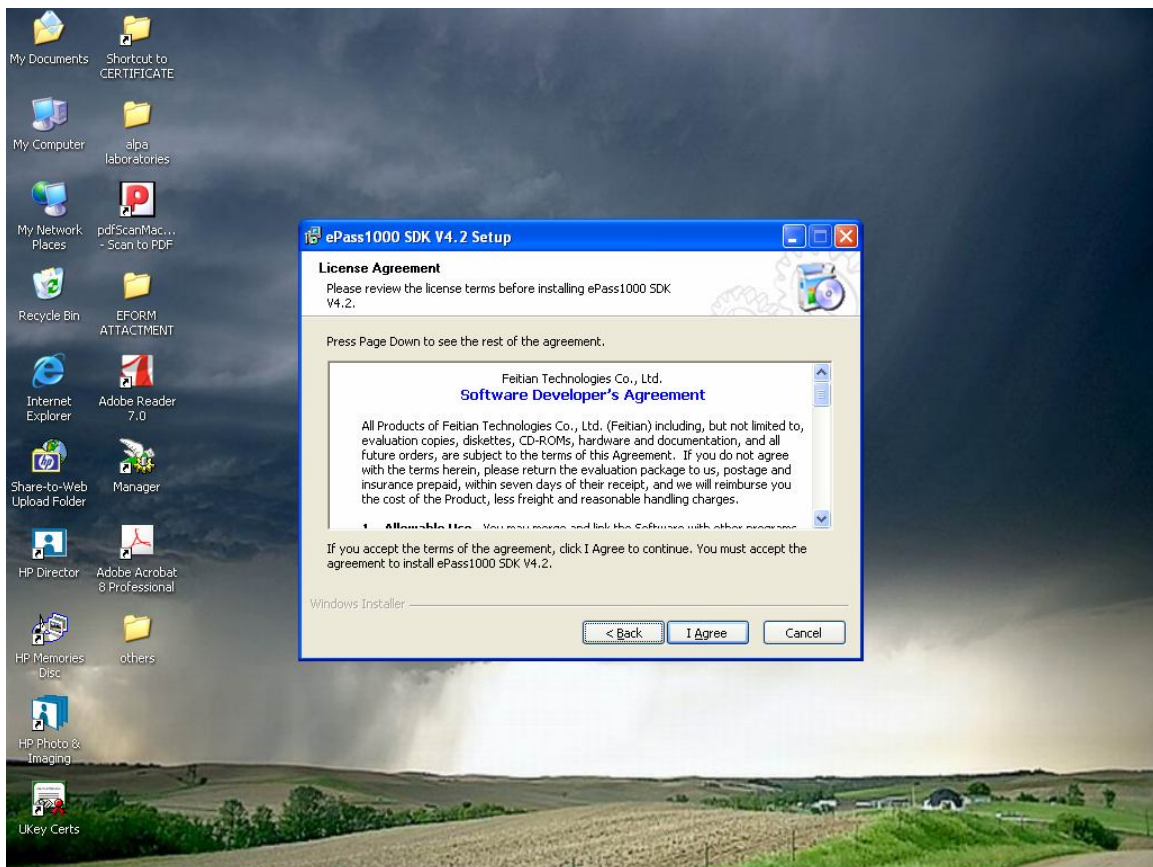
HOW TO INSTALL USB DRIVER?



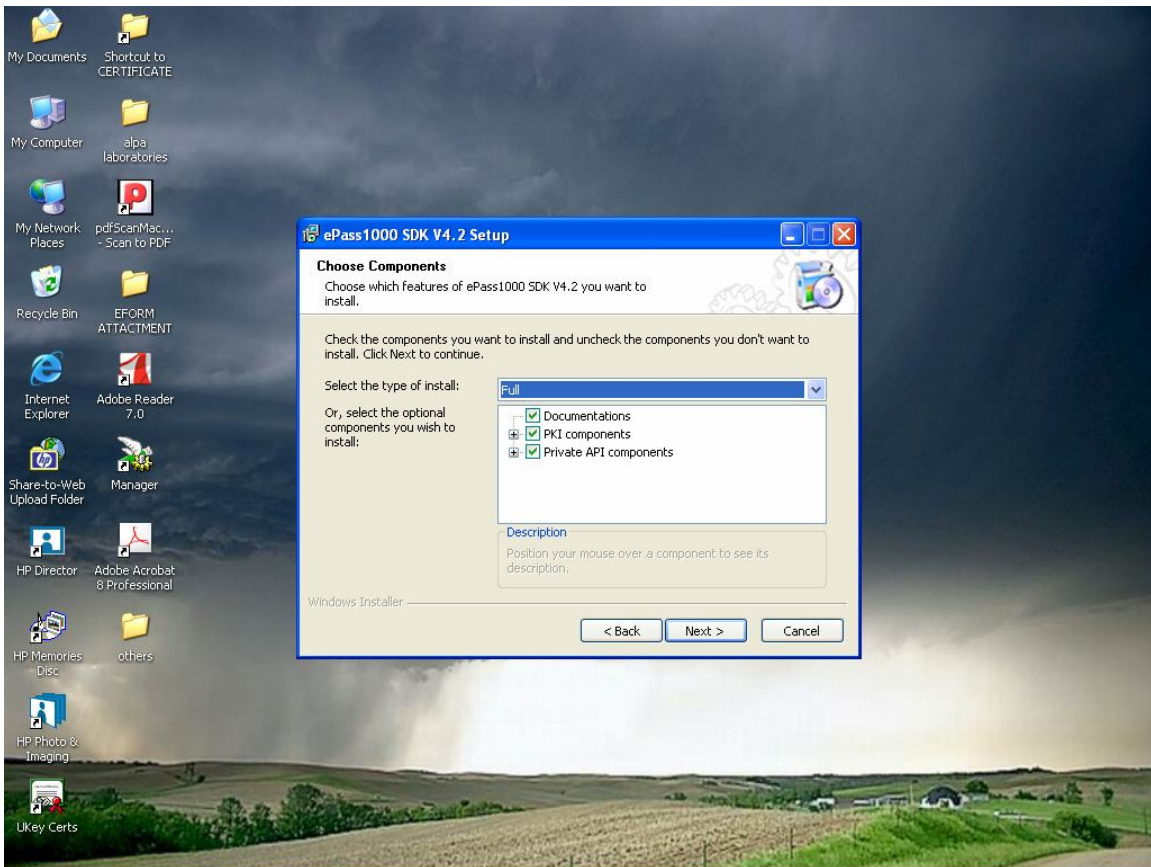
- 1) **Open the folder “Epass1000 Driver” from the CD or email.**
- 2) **And open or click twice “setup”**



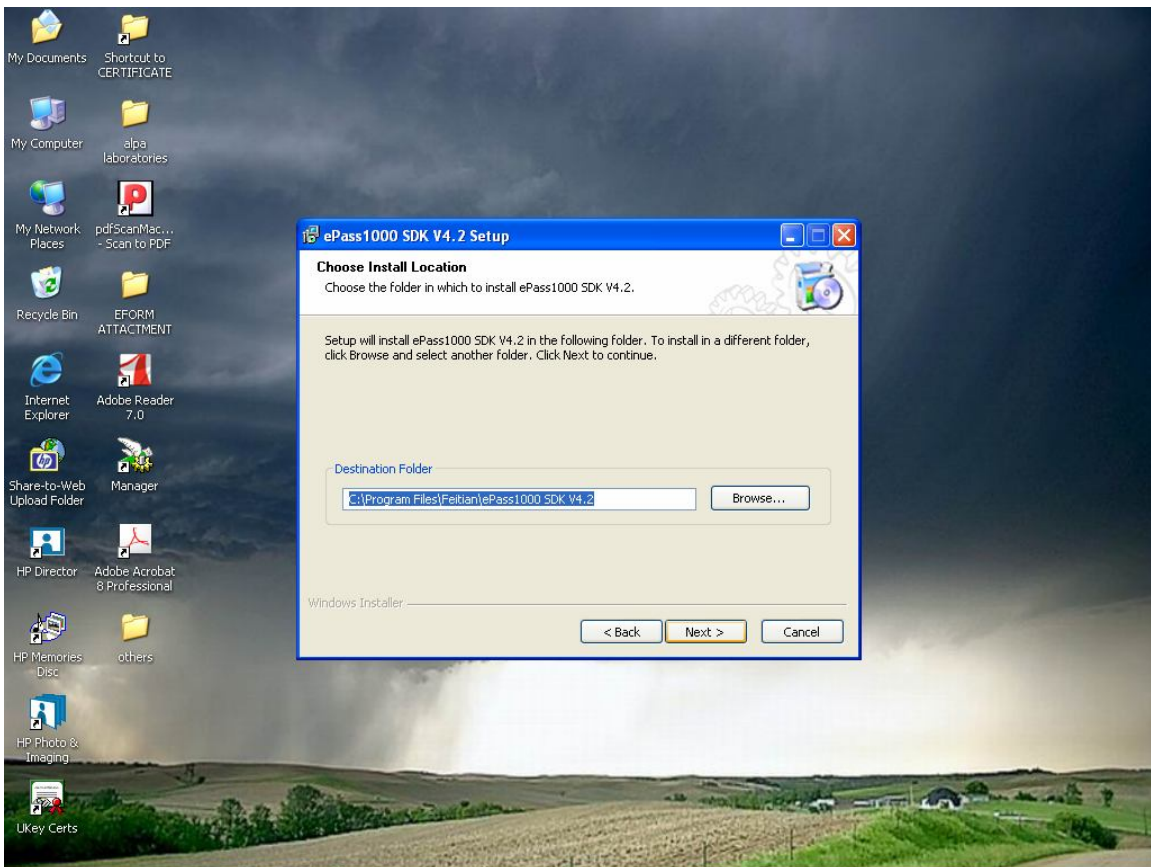
CLICK "NEXT"



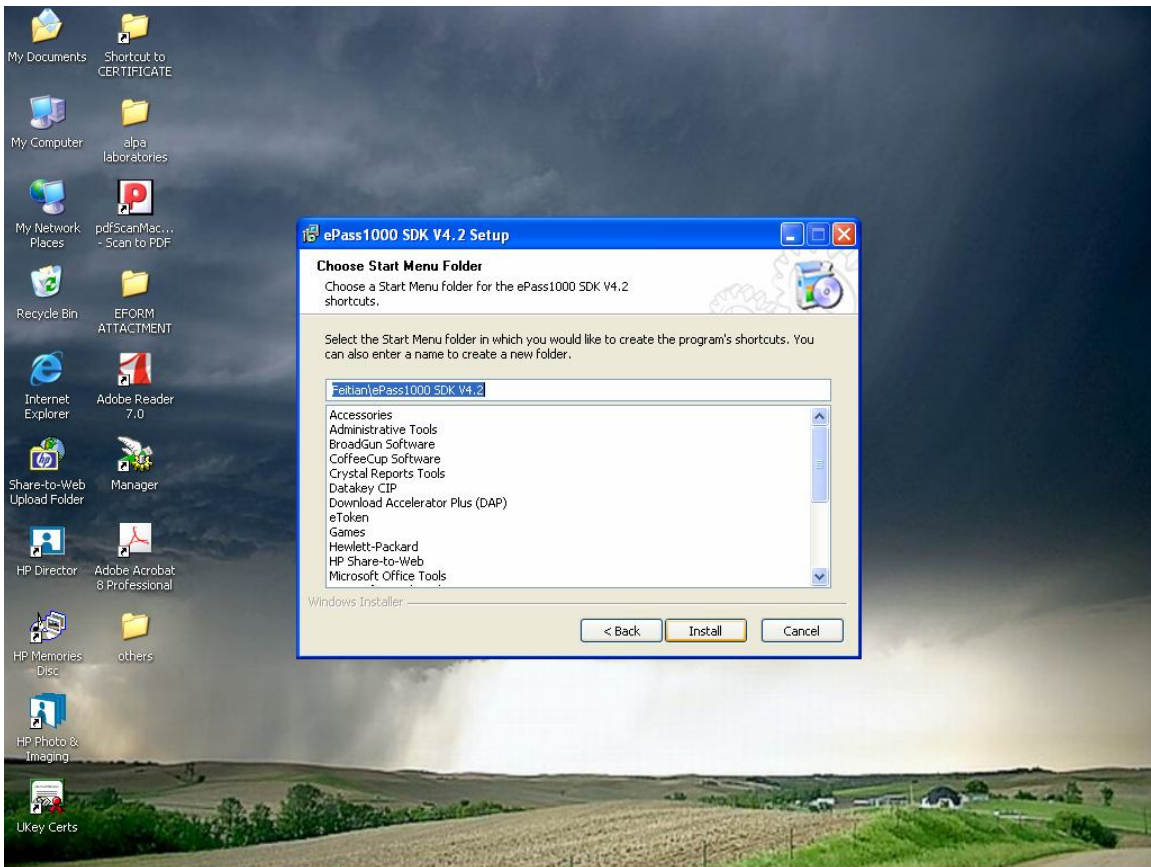
CLICK "I AGREE"



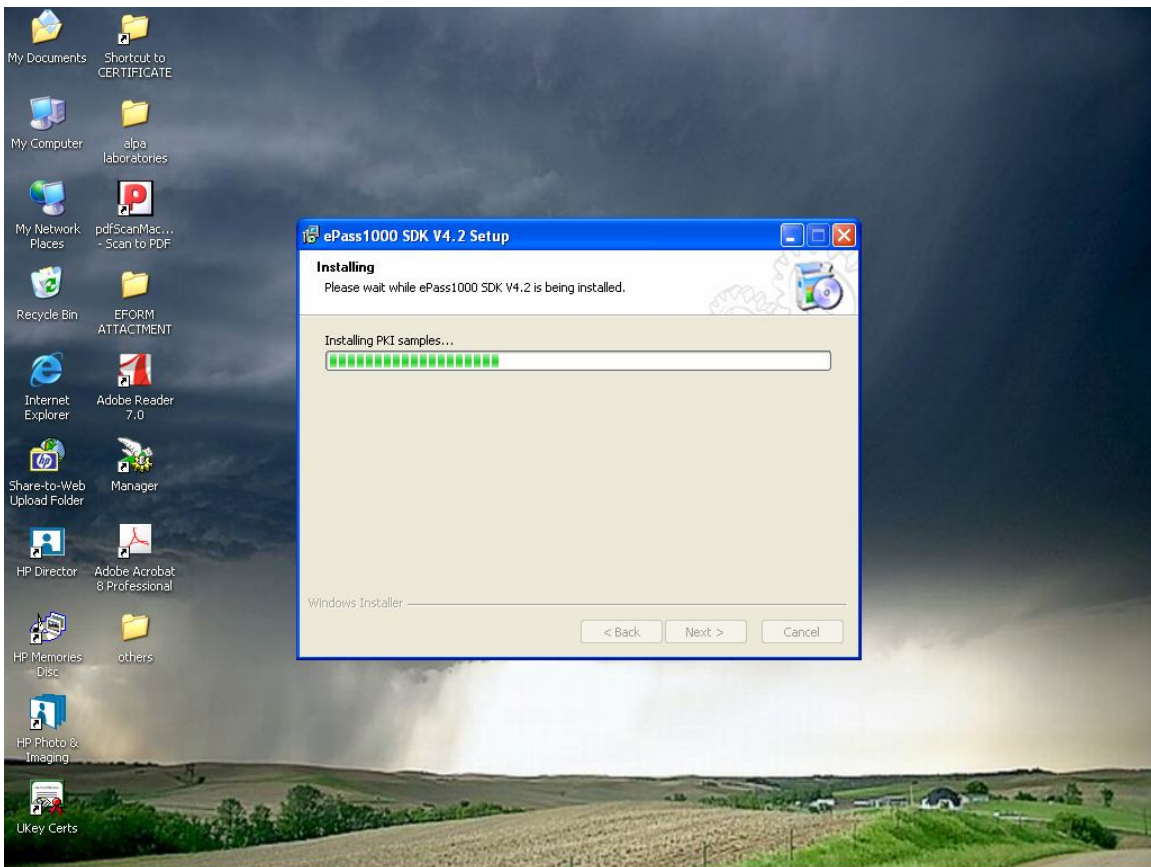
CLICK "NEXT"



CLICK "NEXT"



CHOOSE A FOLDER & CLICK "INSTALL"



INSTALLATION COMPLETE

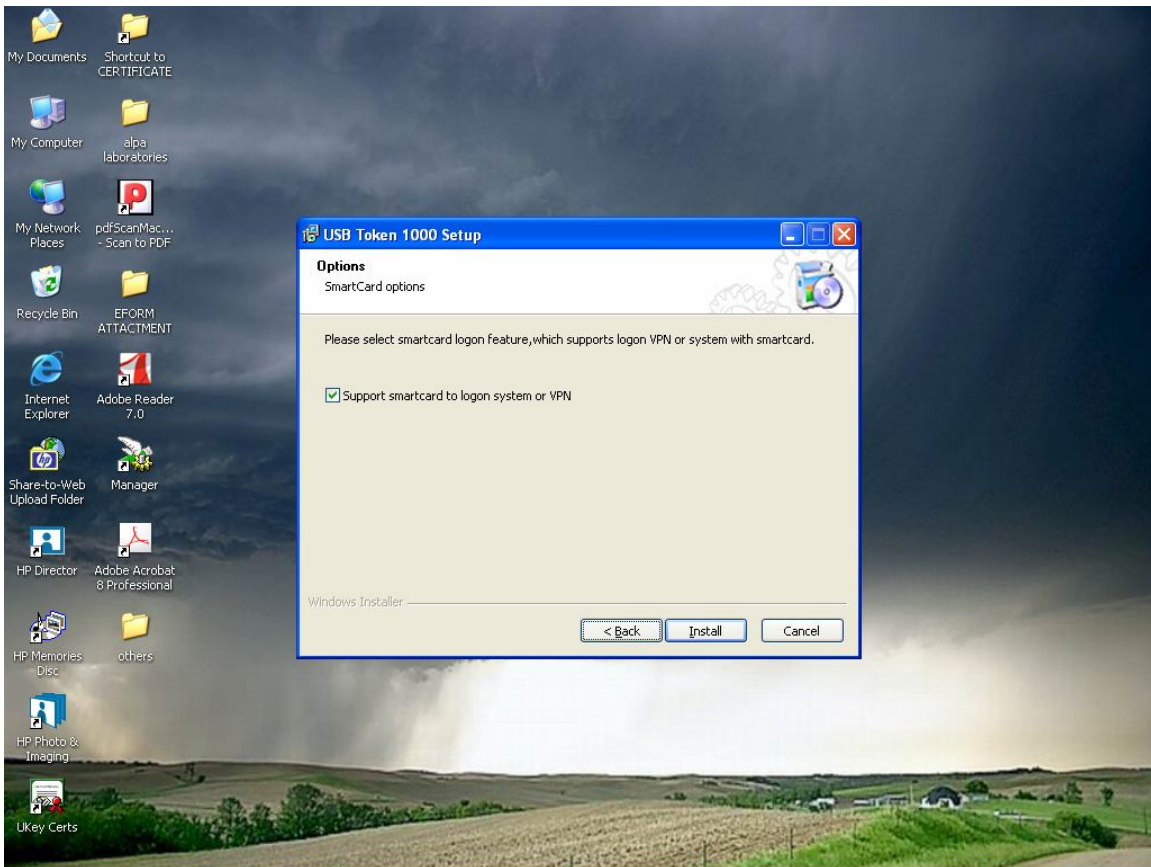


CLICK "FINISH"
USB SOFTWARE INSTALLED

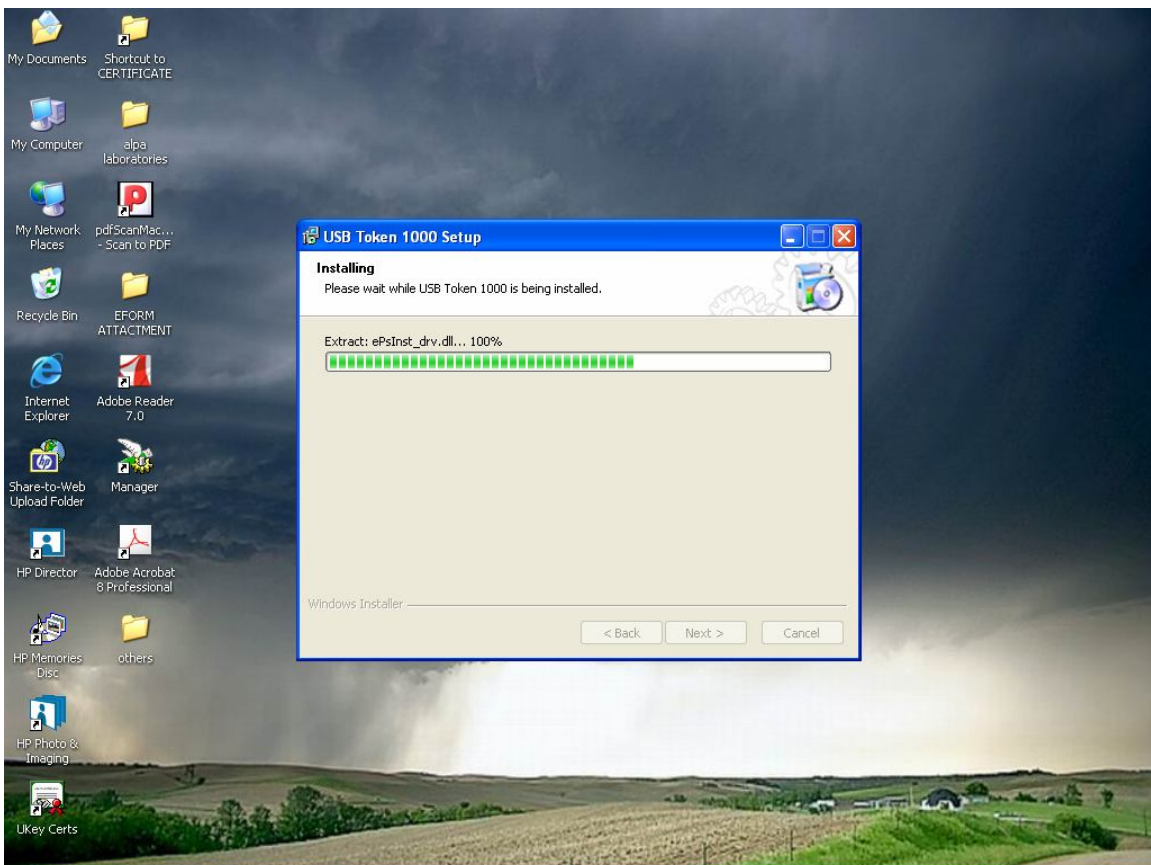
EPASS USB DRIVER SETUP INSTALLATION.

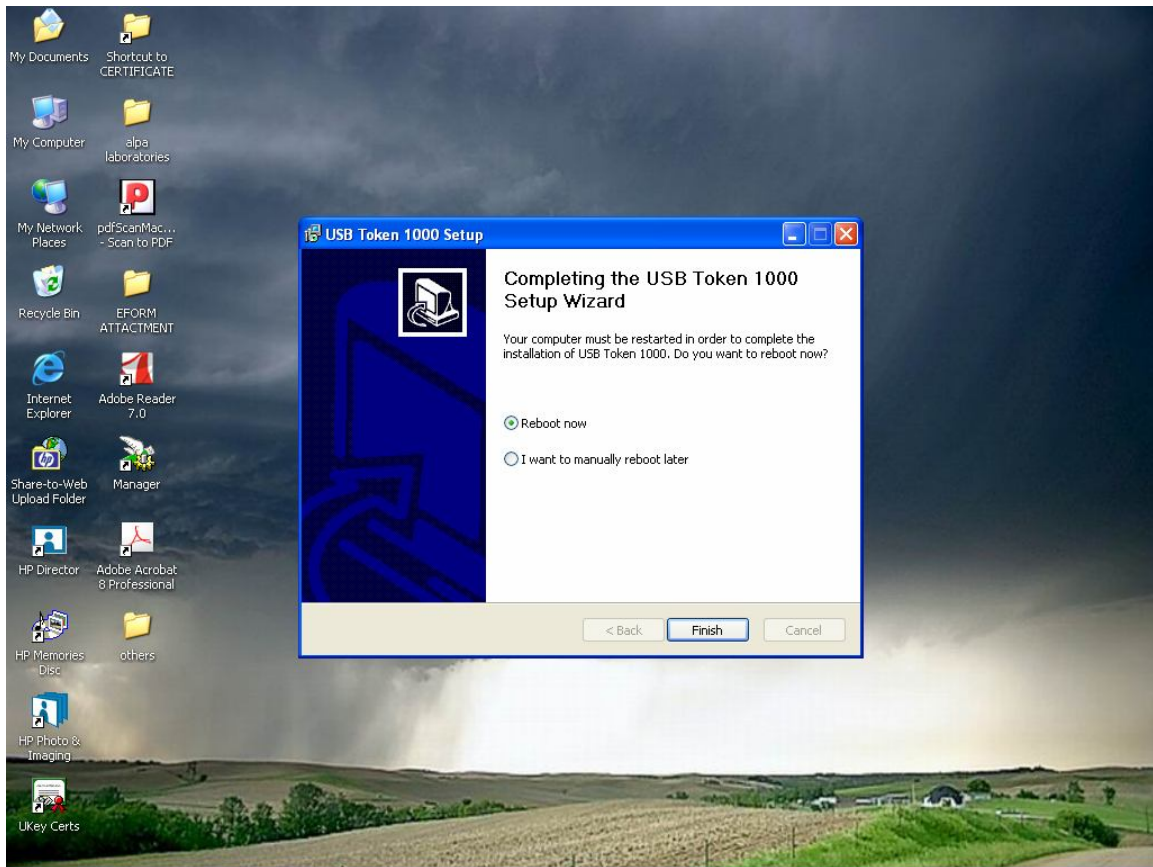


CLICL "NEXT"



CHECK "SUPPORT SMARTCARD TO LOGON SYSTEM OR VPN"
CLICK "INSTALL".





REBOOT YOUR SYSTEM
CLICK “**FINISH**”

INSTALLED SUCCESSFULLY.

FOR ANY OTHER INFORMATION

LOGON TO www.digitalsignature.in



Ishika Technologies Private Limited
Licensed Registration Authority (LRA), of [mtnlTrustLine](http://mtnlTrustLine.com) & e-Mudhra
for distribution of Digital Signature Certificate all over India.

P-121, Block-B, Ground Floor,
Lake town
Kolkata - 700 089,
West Bengal, INDIA
Ph. 91-33-40068960 / 25346090
Email : dsc@ishikatech.com

Visit us at www.digitalsignature.in

Manual No. DSC/02/2009