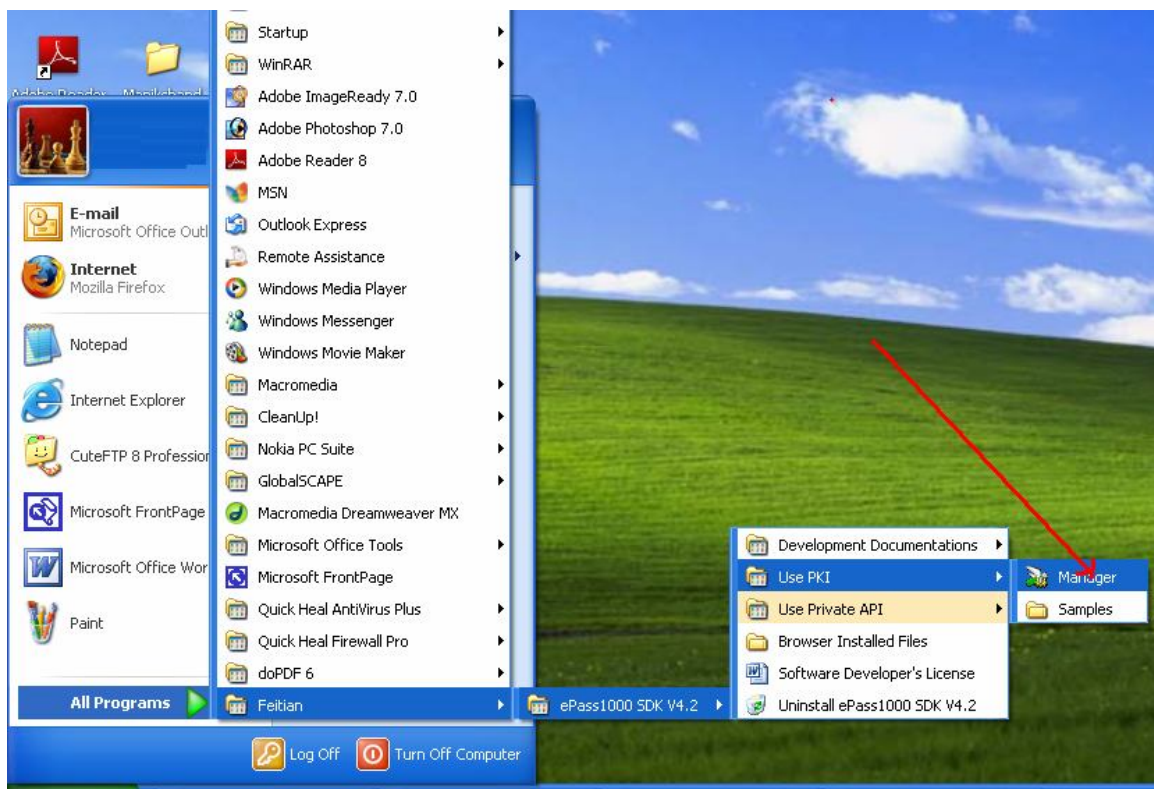


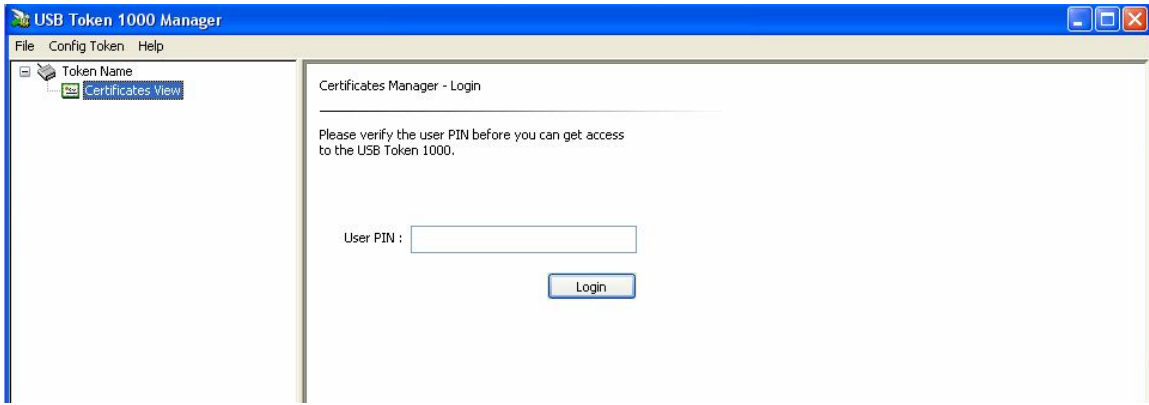


## How to view or verify your DSC from Etoken?

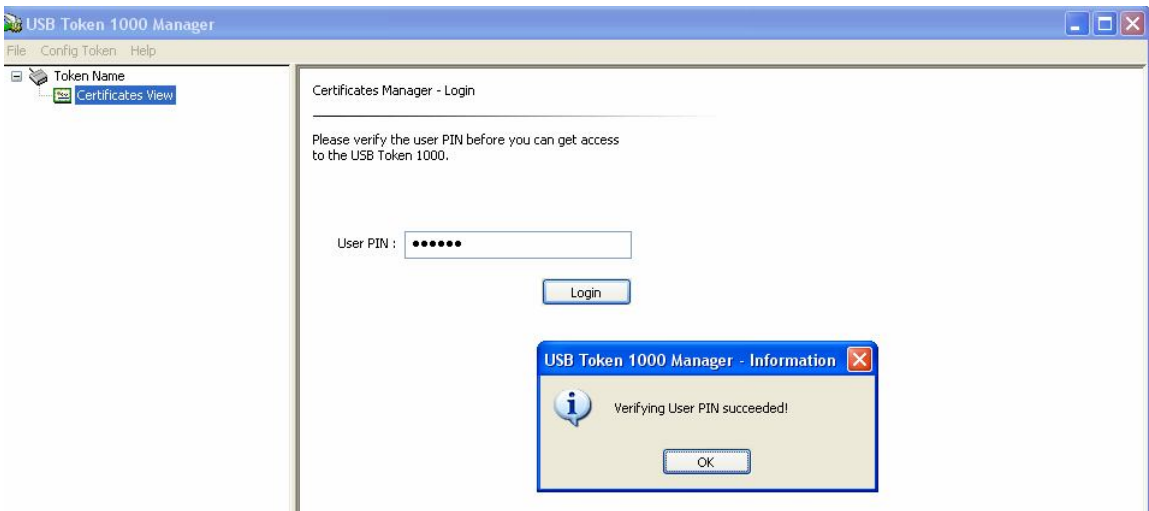
- 1) After you install the Epass1000 Driver” from the CD or email.
- 2) Insert your Etoken to USB drive.



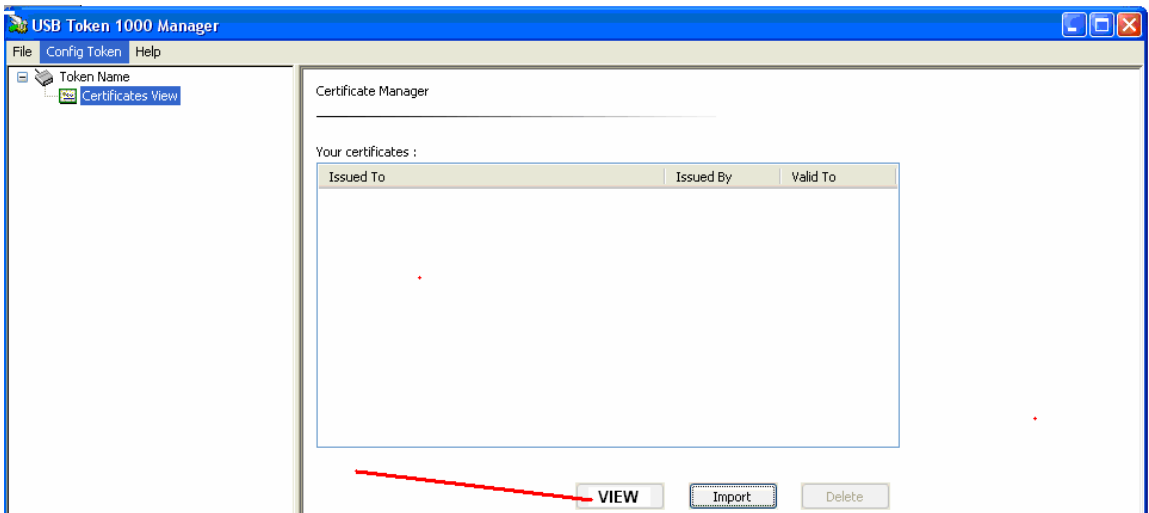
- 3) Go to **START** and select the **Fetian > Epass1000SDK v4.2> USE PKI > Manager**  
Click “**Manager**”



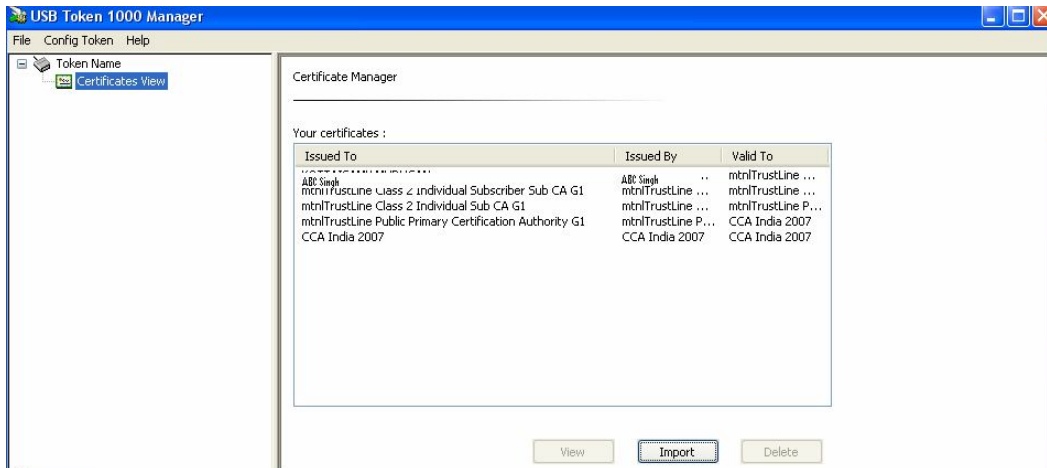
4) Select “Certificate View” and enter USER PIN as 123456 or provided.



5) Click Login and OK



6) Select “VIEW”



7) You may view your DSC details.

**Ishika Technologies Private Limited**  
**Licensed Registration Authority (LRA), of mtnlTrustLine & e-Mudhra**  
 for distribution of Digital Signature Certificate all over India.

P-121, Block-B, Ground Floor,  
 Lake town  
 Kolkata - 700 089,  
 West Bengal, INDIA  
 Ph. 91-33-40068960 / 25346090  
 Email : dsc@ishikatech.com

**Visit us at [www.digitalsignature.in](http://www.digitalsignature.in)**

[ AN ISO 9001:2008 Certified Company ]

Manual No. DSC/04/2009